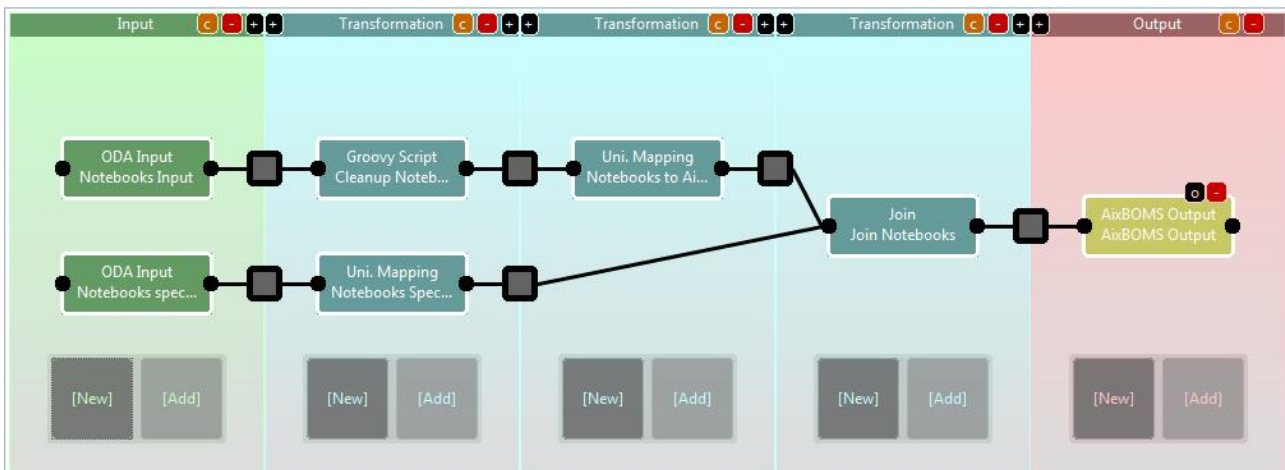


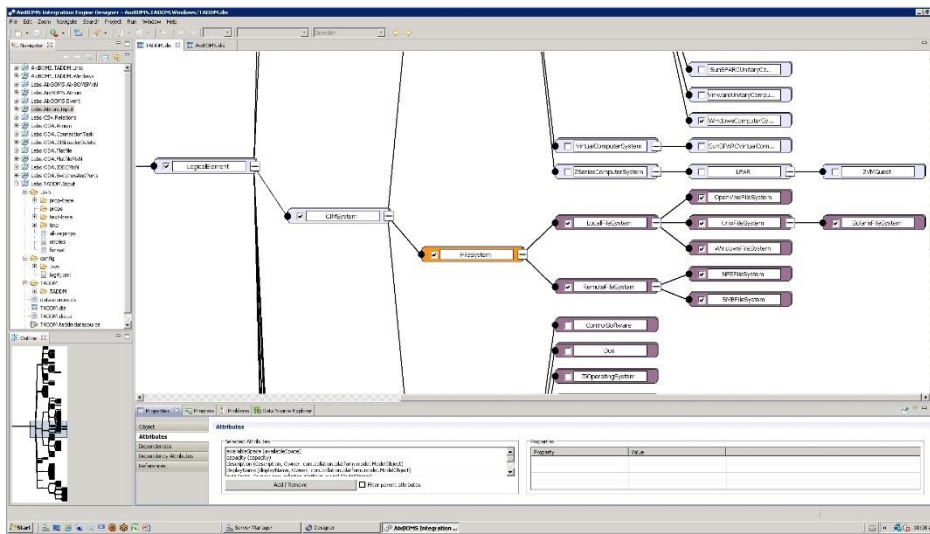
The AixBOMS Integration Engine Enterprise is a high-end solution facilitating the integration of data from a wide variety of sources with a CMDB or a CMS. It is based on the ETL process which distinguishes three process steps:

- ✗ **Extract:** select and make available the required data
- ✗ **Transform:** apply rules for clean-up of data and mapping of source and target system data structures in order to prepare data for loading
- ✗ **Load:** save data to the target database

In AixBOMS, all three steps are supported by a graphical user interface as well as powerful wizards for automation and quality assurance of individual process tasks. An iterative methodology and integrated job control make it possible to employ the Integration Engine Enterprise in complex environments and with large amounts of data.



The easy-to-use **Job Editor** is the Integration Engine's central and entirely graphics-oriented tool for the definition of complete integration process chains. The job configurations are organized in color-coded columns containing the selected configuration tasks which can be connected via mouse-click. Further detail information and configuration tasks, sources, targets, etc. may also be added by just a click, as well as additional transformation columns. Once tasks have been defined and saved they may easily be re-used for further job definitions.



the graphics-oriented AixBOMS Preselection Editor is used during the „Extract“ process

A whole suite of user-friendly and context-sensitive wizards supports the user when working through individual tasks, leading to both faster results and fewer mistakes by making use of smart pre-selections and built-in business rules. Any problems or errors encountered when executing an integration process are documented in a clear and easily comprehensible manner. By making log files available based on AixBOMS IDs, a dedicated **Logging Editor** supports detailed review and analysis of completed load jobs; it is easy to search for and find specific entries according to a number of criteria – even in extensive data sets.

Jobs

Job	Duration
AixBOMSOutput	00:00:00
ClientOutput	00:00:00
ClientInput	00:00:00

Objects (List 4)

ID	Type	Status	Exception	Message	Description
Obj_864087235ac2d6f	Object	Ok			
Obj_7396322844268f9	Object	Ok			
Obj_426e1227af800f	Object	Ok			
Rel_864087235ac2d6f	Relation	Ok			
CombOutput JDBC	Reading	Ok			
CombOutput	Mapping	Ok			
CombOutput	Writing	Ok			

Logging

Date: 2018-03-15 10:00:00
 Organisation: AixBOMS
 Person: [Name]
 Relation: [Name]

Highlights

- ETL tool for data import and export
- Graphical editors for data selection and transformation
- Integration of rules and scripting language
- Job Editor, job scheduling, load handling, Logging Editor
- Preconfigured software adapters