

## AixBOMS Floor Plans

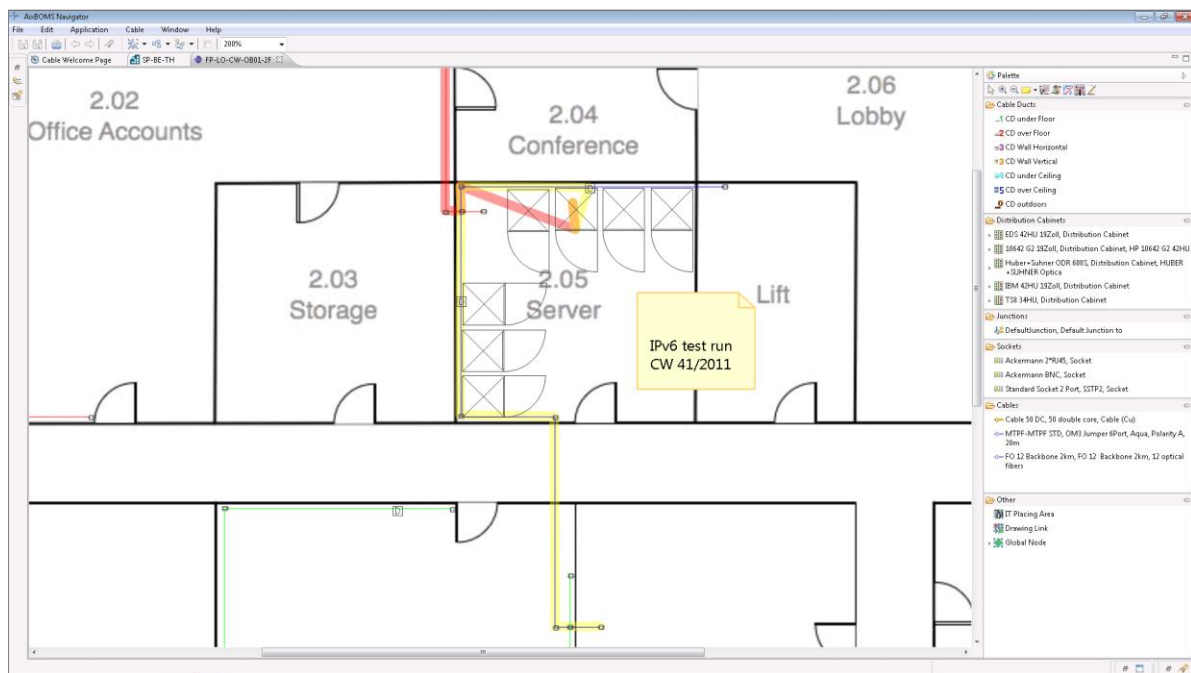


Of Cables and Connections

## Floor Plan Editor

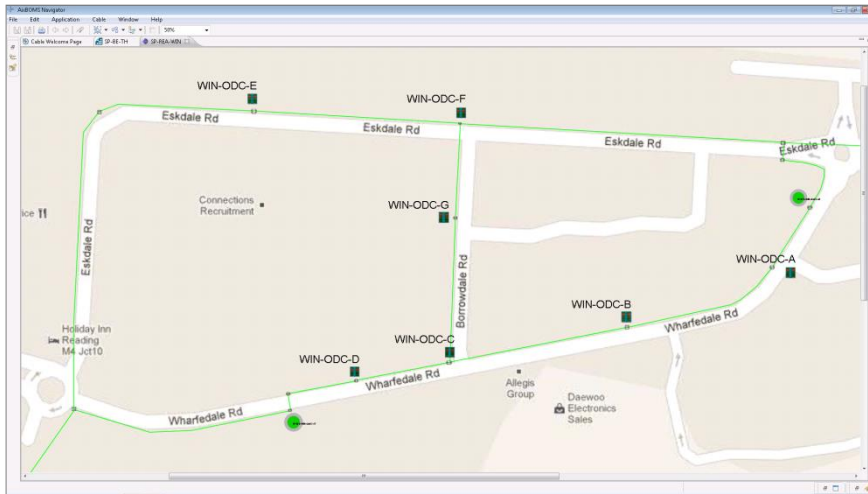
The integrated Floor Plan Editor makes it easy to display and manage floor and site drawings without the need for additional graphics software. A freely configurable palette is available for the insertion – via point and click – of IT and cabling infrastructure components (all of which are database objects complete with attributes and relationships) such as racks, cable ducts or sockets into the drawings. Based on user-supplied scaling information, cable and duct lengths can be calculated automatically; InfoFields and simple notes can be used to enrich the drawing with meaningful additional information.

The Floor Plan Editor makes use of a layer technology which – for clarity's sake – allows individual users to configure the plan they are working on to display only the objects and information that they need to see.



Floor plan displaying cable infrastructure components and cable path

## AixBOMS Floor Plans



Site plan displaying cable infrastructure and links to further plans

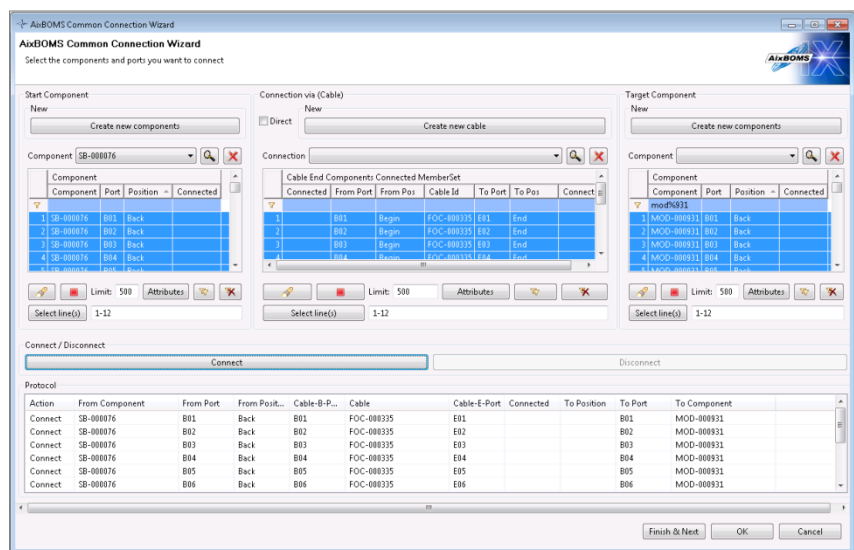
Site plans facilitate the documentation of larger and outdoor infrastructure installations such as campuses, neighborhoods and company premises.

Links to other area or site plans make it easy to navigate between multiple locations.

For visualization and management of a distribution cabinet's contents, the RackView Editor may be launched directly from a floor or site plan; for details of the RackView Editor functionality, please refer to the respective document.

The Connection Wizard has been designed specifically for making bulk connection transactions – allowing one or multiple start components, none, one, or multiple cables and one or multiple target components.

Connection technologies supported can be as simple as straightforward port to port or as complex as MPO/MTP. Underlying business rules are in place to help avoid unnecessary errors.



Wizard for multiple and complex connections

### Highlights:

- Floor and site plans displaying IT and cabling infrastructure components
- User-configurable palette for easy access to frequently used component types
- Automated calculation of cable and duct length
- Connection Wizard for complex and bulk connection transactions